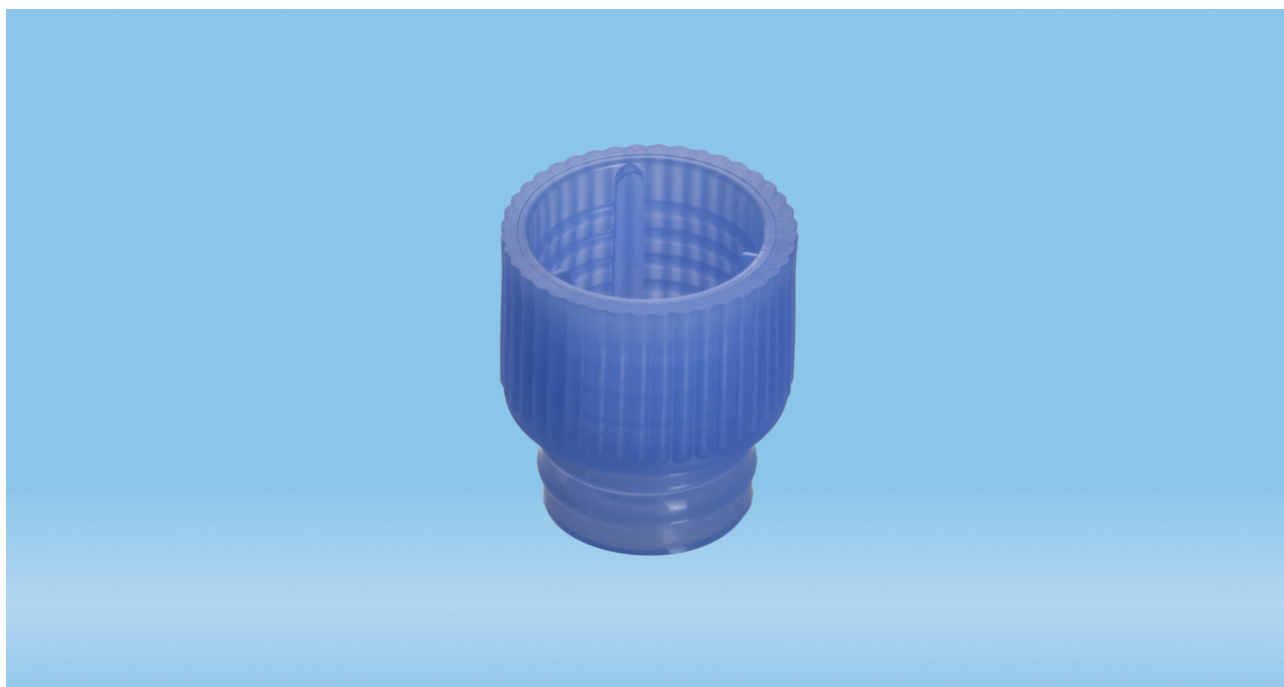




Product Specification
Push cap, blue, suitable for tubes Ø 11.5 and 12 mm

Page 1



Product description

| | |
|---------------------|---|
| Order number | 65.809.500 |
| Product description | Push cap, blue, suitable for tubes Ø 11.5 and 12 mm, 1,000 piece(s)/bag |

Product characteristics

| | |
|--------------|------------------------|
| Cap | standard cap |
| Closure type | push cap |
| Suitable for | tubes Ø 11.5 and 12 mm |

Material & colours

| | |
|-------------------|----------------------------------|
| Product material | Low Density Polyethylene (LD-PE) |
| Colour of product | blue |

Purity & certification

| | |
|------------------|-------------------------|
| Product category | no medical device IVD |
| Batched | no |

This is the current specification for this product. Sarstedt reserves the right to make changes, in full or in part, at any time without prior notification.





Packaging

| | |
|-------------------------------|---------------|
| Minimum order qty. | 10000 |
| Type of smallest subpackaging | bag |
| Piece(s) / inner box | 1000 |
| Piece (s) / outer case | 10000 |
| Piece(s) / pallet | 420000 |
| Depth of case | 398 mm |
| Width of case | 398 mm |
| Height of case | 250 mm |
| Case volume | 0.0396 cbm |
| Weight of product | 0.0006 kg |
| Weight of case | 6.66 kg |
| EAN of inner box | 4038917121538 |
| EAN case | 4038917017817 |

This is the current specification for this product. Sarstedt reserves the right to make changes, in full or in part, at any time without prior notification.

