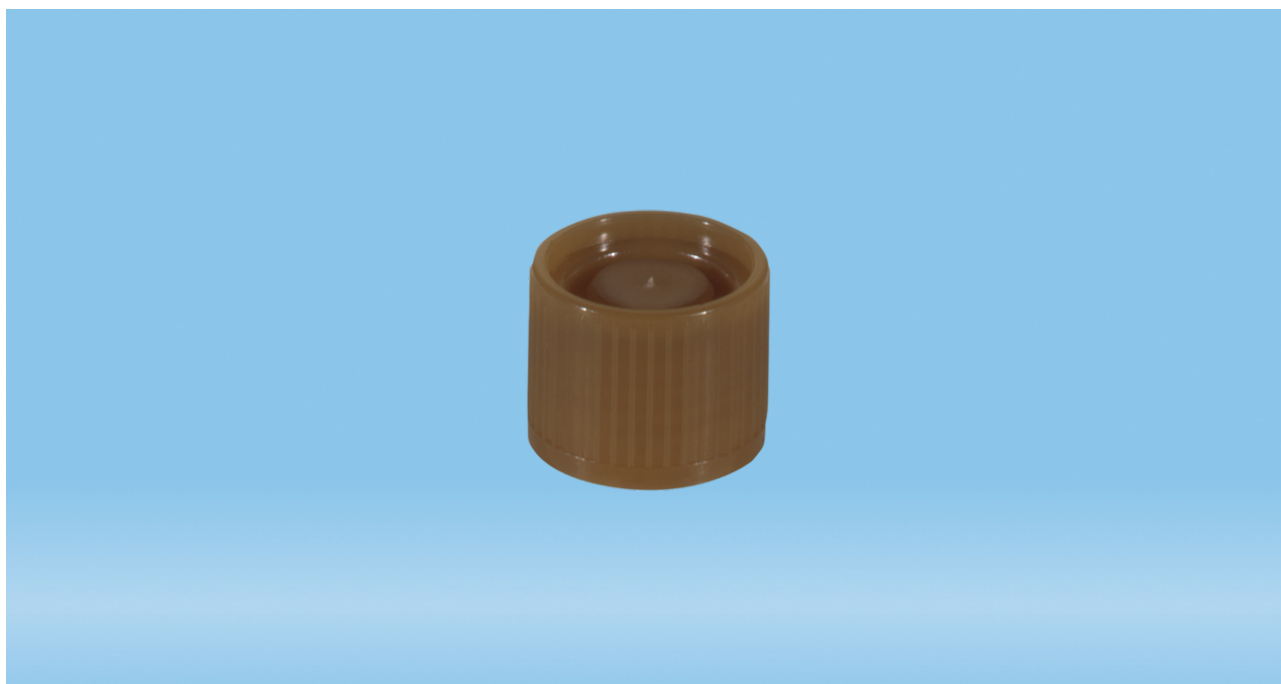




Product Specification
Screw cap, brown, suitable for tubes Ø 16-16.5 mm

Page 1



Product description

Order number	65.176.023
Product description	Screw cap, brown, suitable for tubes Ø 16-16.5 mm, 1,000 piece(s)/bag

Product characteristics

Closure type	screw cap
Suitable for	tubes Ø 16-16.5 mm

Material & colours

Product material	High Density Polyethylene (HD-PE)
Colour of product	brown

Purity & certification

Product category	no medical device IVD
Batched	yes

This is the current specification for this product. Sarstedt reserves the right to make changes, in full or in part, at any time without prior notification.





Product Specification
Screw cap, brown, suitable for tubes Ø 16-16.5 mm

Page 2

Packaging

Minimum order qty.	1000
Type of smallest subpackaging	bag
Piece(s) / inner box	1000
Piece (s) / outer case	5000
Piece(s) / pallet	200000
Case volume	0.0415 cbm
Weight of product	0.0009 kg
Weight of case	7.15 kg
EAN of inner box	4038917101585
EAN case	4038917070935

This is the current specification for this product. Sarstedt reserves the right to make changes, in full or in part, at any time without prior notification.

Date of issue:
2024-05-06

This document was prepared by EDP support and is valid without signature.



SARSTEDT