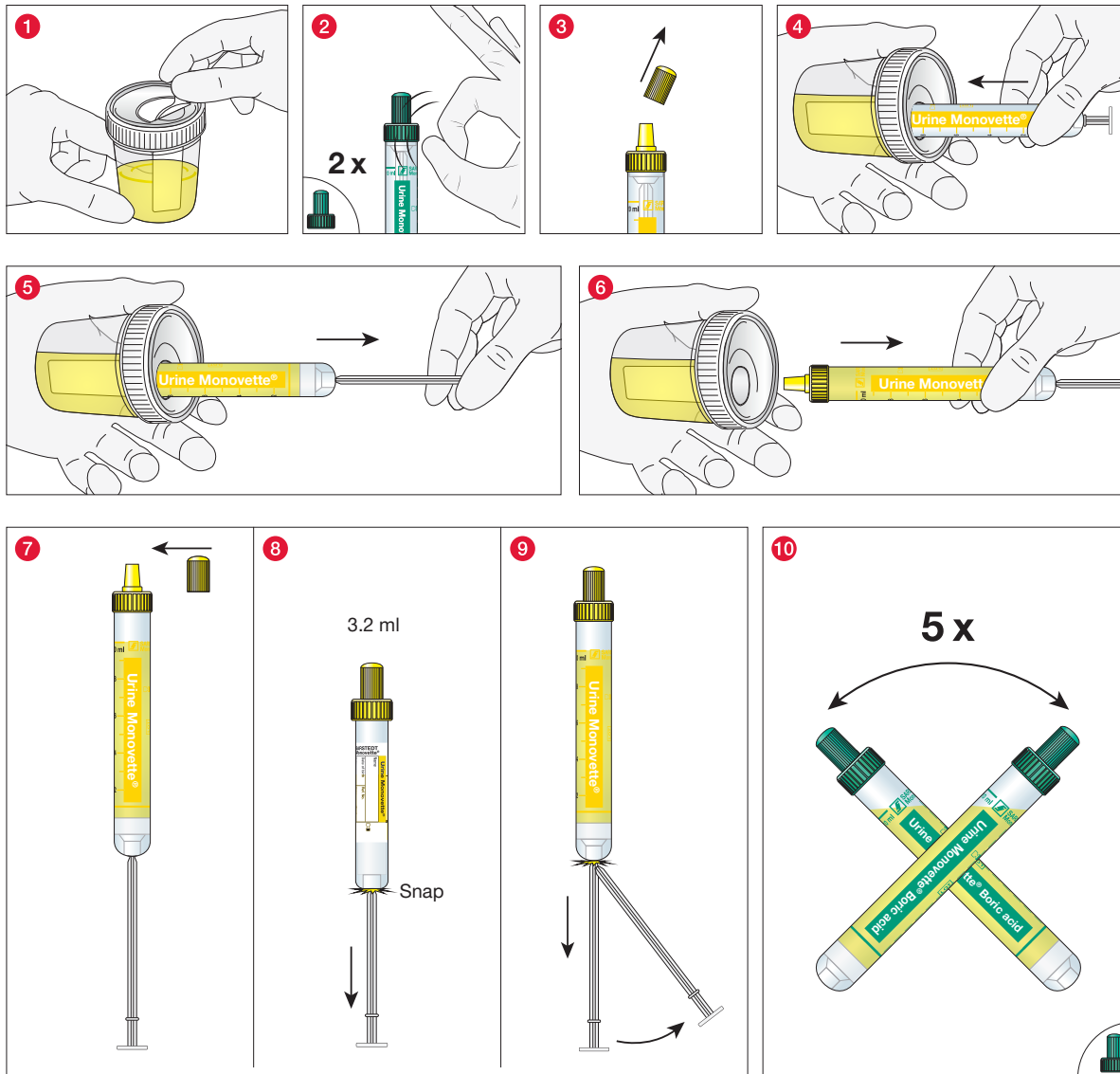


# NFT urine collection system handling

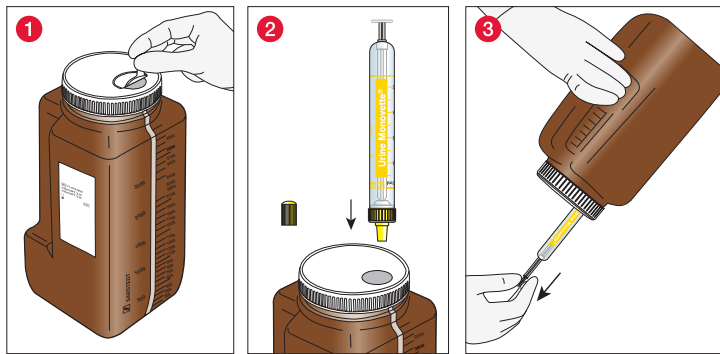
## Urine collection from the NFT urine cup



- 1 Peel off the safety label from the lid of the urine cup.
- 2 **ONLY if using a Urine Monovette® Boric acid:** Hold the Urine Monovette® upright with the tip pointing upwards. Tap the Urine Monovette® twice to let the boric acid settle at the bottom of the tube.
- 3 Remove the stopper from the tip (luer cone) of the Urine Monovette® and set aside for later.
- 4 Ensure that the NFT urine cup lid is tightly secured to prevent spillage! Place the NFT cup on its side so the built-in needle-free transfer unit is parallel to the table surface.  
  
Guide the tip of the Urine Monovette® into the needle-free transfer unit ensuring that the tip penetrates the membrane and the Urine Monovette® is firmly in place.  
  
**ONLY if using a Urine Monovette® Boric acid:** Avoid pushing the piston rod further into the Urine Monovette® to prevent any boric acid from leaking out.
- 5 Gently pull the piston rod back towards the bottom of the of the Urine Monovette® and wait until no more urine flows in.
- 6 Detach the Urine Monovette® from the NFT unit.
- 7 Turn the Urine Monovette® upright so that the tip points upwards and close it securely using the stopper you previously set aside.
- 8 **ONLY if using a Urine Monovette® 3.2 ml:** Withdraw the piston rod until it audibly clicks into the end position.
- 9 Break off the piston rod.
- 10 **ONLY if using a Urine Monovette® Boric acid:** Invert the Urine Monovette® Boric acid around 5 times or until the boric acid is completely dissolved.

# NFT urine collection system handling

## Urine collection from the NFT 24-hour urine container

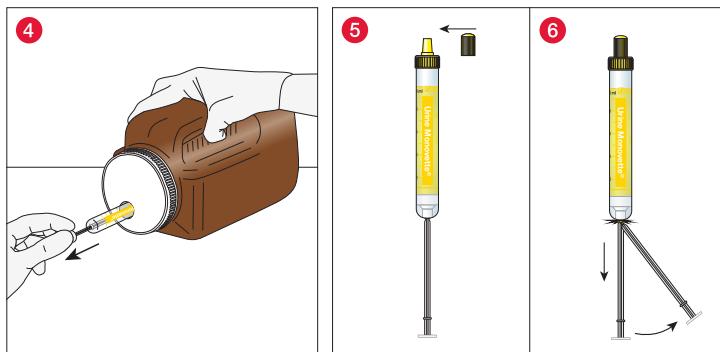


1 Swirl the tightly closed container containing urine several times until the urine is well mixed. Peel off the safety label from container lid. Read the volume from the label or from the scale and the transparent viewing window.

2 Remove the stopper from the tip (luer cone) of the Urine Monovette® and set aside for later. Guide the tip of the Urine Monovette® into the needle-free transfer unit ensuring that the tip penetrates the membrane and the Urine Monovette® is firmly in place.

3 **For urine volumes of 400–1,000 ml:** Lift the NFT urine container by the recessed grips (handles) and tilt it forward so that the opening points slightly downward as shown in image 3. Gently pull the piston rod back to the bottom of the Urine Monovette® and wait until no more urine flows in. Return the NFT container to an upright position on the work surface.

Detach the Urine Monovette® from the NFT unit.



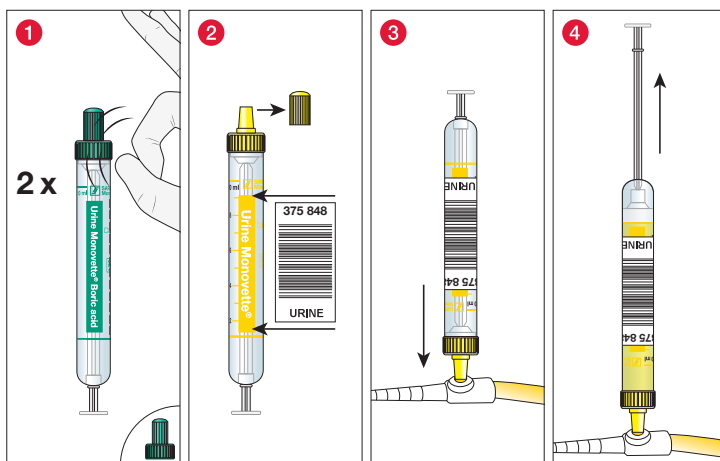
4 **For volumes greater than 1,000 ml:** Lift the NFT urine container by the recessed grips (handles) and turn it so the container is in a horizontal position. Gently pull the piston rod back to the bottom of the Urine Monovette® and wait until no more urine flows in. Return the NFT container to an upright position on the work surface.

Detach the Urine Monovette® from the NFT unit.

5 Turn the Urine Monovette® upright so that the tip points upwards and close it securely using the stopper you previously set aside.

6 Break off the piston rod.

## Urine collection from a catheter



1 **ONLY if using a Urine Monovette® Boric acid:** Hold the Urine Monovette® upright with the tip pointing upwards. Tap the Urine Monovette® twice to let the boric acid settle at the bottom of the tube.

2 Stick the barcode label along the line so that it is exactly vertical. Remove the stopper from the tip of the Urine Monovette® and set it aside for later.

3 Disinfect the membrane in accordance with the internal guidelines. Pierce the membrane with the luer tip of the Urine Monovette®.

4 Use the piston rod to pull the plunger to the bottom of the Urine Monovette® and wait until no more urine flows.

5 Turn the Urine Monovette® upright so that the tip points upwards and close it securely using the stopper you previously set aside.

6 **ONLY if using a Urine Monovette® 3.2 ml:** Withdraw the piston rod until it audibly clicks into the end position.

7 Break off the piston rod.

8 **ONLY if using a Urine Monovette® Boric acid:** Invert the Urine Monovette® Boric acid around 5 times or until the boric acid is completely dissolved.

