

# Safety-Heel® Newborn/Preemie – incision lancet

Heel puncture for premature and newborn babies



## Maximum blood collection with minimal penetration depth

Metabolic diseases and endocrinopathies should be detected as early as possible in newborns so that the correct treatment can begin and be effective. 'A newborn screening' blood collection has to be performed to do this, usually by puncturing the baby's heel. Puncture with conventional lancets is vertical, so the risk of injury (i.e. cutting right through to the bone) and haematoma is very high. This is often an uncomfortable procedure. The Safety-Heel® incision lancet is an ideal way of reducing the pain experienced and thereby optimising the blood collection process.

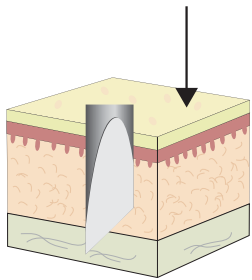
The crescent-shaped incision path and shallow penetration depth minimise the formation of haematoma. This method enables much gentler blood collection, particularly with young patients.

## Innovative high-speed lancet with crescent-shaped, gentle cutting technique

- Optimum blood flow without additional rubbing or massage
- Adequate blood volume
- Significantly less pain
- Rapid healing due to low penetration depth
- Minimises formation of haematoma

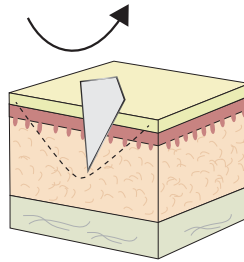


# Safety-Heel® Newborn/Preemie – incision lancet



## Standard lancet

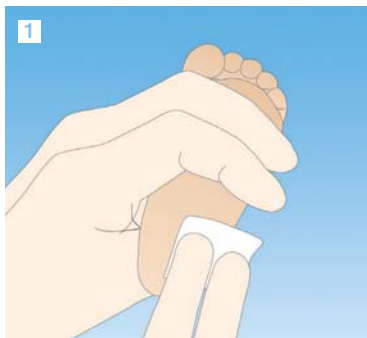
- **Vertical** firing direction of the blade
- Cylindrical puncture
- Haematoma formation



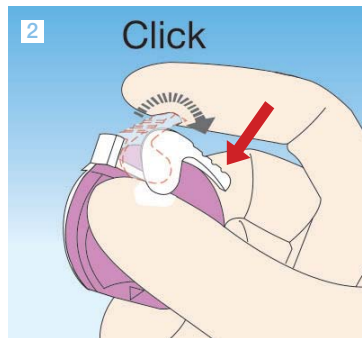
## Incision lancet

- **Crescent-shaped** incision path
- Shallow penetration depth
- Minimises formation of haematoma

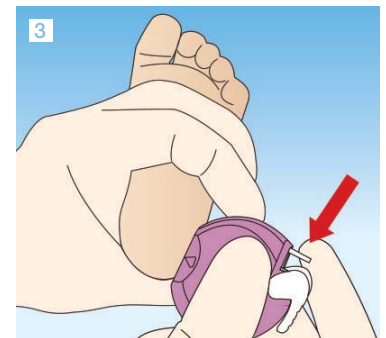
## Handling the Safety-Heel® – incision lancet



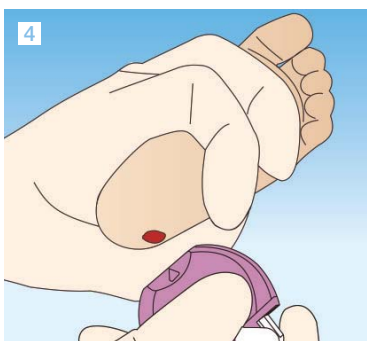
1 Select and disinfect a suitable puncture site.



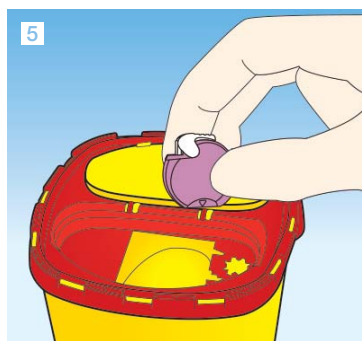
2 Click  
The lancet is ready to use once the white tensioning device has been pulled back using your index finger.



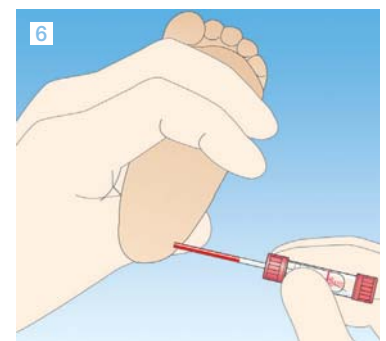
3 Lift the foot into a suitable position. Press the blade opening flat against the selected and disinfected puncture site and press the trigger button. The safety incision lancet must **always** be positioned and triggered **parallel to the length of the foot** (never across the heel)! The triangle points to the blade exit point.



4 After pressing the firing button, remove the lancet from the heel.



5 Dispose of the lancet in a suitable disposal box.



6 Discard the first drop of blood. Then fill the capillary tube.

## Ordering information

	Art. no	Application	Penetration depth	Incision length	Packaging
●	85.1025	Premature babies	0.85 mm	1.75 mm	50/inner box 200/outer box
●	85.1026	Neonates	1.0 mm	2.5 mm	

SARSTEDT AG & Co. KG  
P.O. Box 12 20  
D-51582 Nümbrecht  
Phone: +49 2293 305 0  
Fax: +49 2293 305 3992  
export@sarstedt.com  
www.sarstedt.com