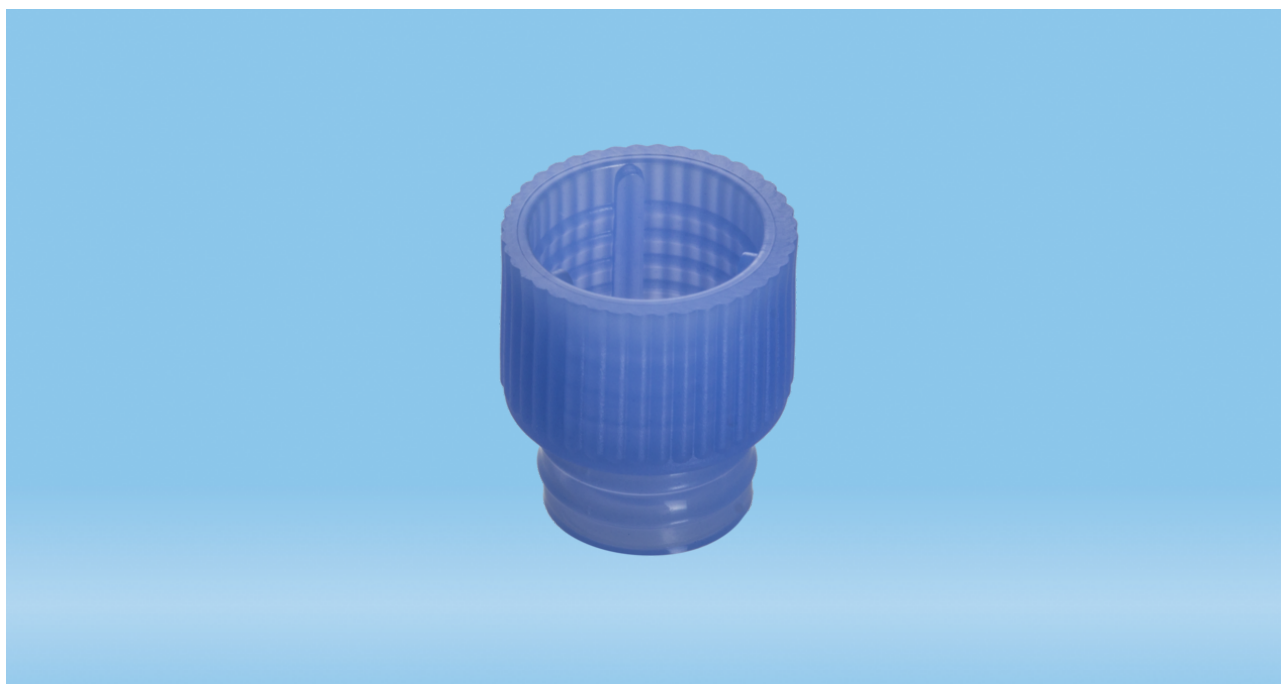




**Product Specification**  
**Push cap, blue, suitable for tubes Ø 11.5 and 12 mm**

**Page 1**



**Product description**

Order number	65.809.500
Product description	Push cap, blue, suitable for tubes Ø 11.5 and 12 mm, 1,000 piece(s)/bag

**Product characteristics**

Cap	standard cap
Closure type	push cap
Suitable for	tubes Ø 11.5 and 12 mm

**Material & colours**

Product material	Low Density Polyethylene (LD-PE)
Colour of product	blue

**Purity & certification**

Product category	no medical device   IVD
Batched	no

This is the current specification for this product. Sarstedt reserves the right to make changes, in full or in part, at any time without prior notification.





**Product Specification**  
**Push cap, blue, suitable for tubes Ø 11.5 and 12 mm**

**Packaging**

Minimum order qty.	10000
Type of smallest subpackaging	bag
Piece(s) / inner box	1000
Piece (s) / outer case	10000
Piece(s) / pallet	420000
Depth of case	398 mm
Width of case	398 mm
Height of case	250 mm
Case volume	0.0396 cbm
Weight of product	0.0006 kg
Weight of case	6.66 kg
EAN of inner box	4038917121538
EAN case	4038917017817

This is the current specification for this product. Sarstedt reserves the right to make changes, in full or in part, at any time without prior notification.

