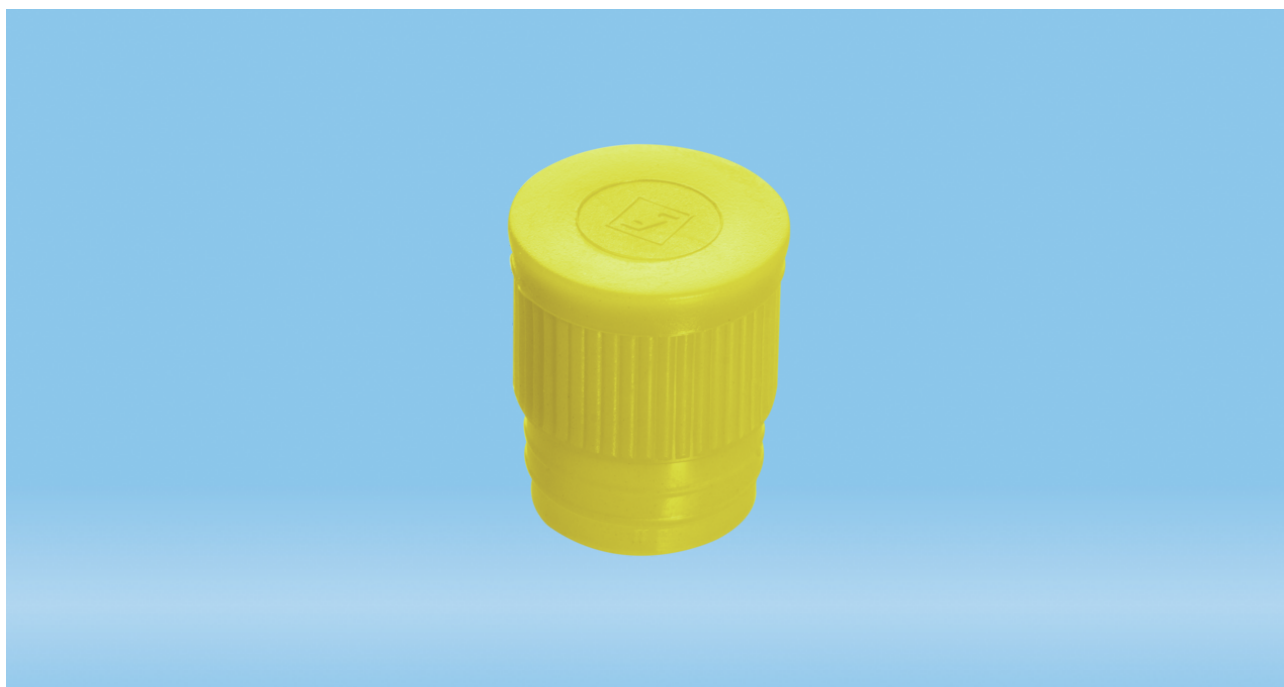




**Product Specification**  
**Push cap, yellow, suitable for tubes Ø 15.5, 16,  
16.5, 16.8 and 17 mm**

**Page 1**



**Product description**

Order number	65.793.514
Product description	Push cap, yellow, suitable for tubes Ø 15.5, 16, 16.5, 16.8 and 17 mm, 1,000 piece(s)/bag

**Product characteristics**

Cap	standard cap
Closure type	push cap
Suitable for	tubes Ø 15.5, 16, 16.5, 16.8 and 17 mm

**Material & colours**

Product material	Low Density Polyethylene (LD-PE)
Colour of product	yellow

**Purity & certification**

Product category	no medical device   IVD
Batched	no

This is the current specification for this product. Sarstedt reserves the right to make changes, in full or in part, at any time without prior notification.





**Product Specification**  
**Push cap, yellow, suitable for tubes Ø 15.5, 16,  
16.5, 16.8 and 17 mm**

**Page 2**

**Packaging**

Minimum order qty.	5000
Type of smallest subpackaging	bag
Piece(s) / inner box	1000
Piece (s) / outer case	5000
Piece(s) / pallet	180000
Depth of case	398 mm
Width of case	398 mm
Height of case	265 mm
Case volume	0.042 cbm
Weight of product	0.0014 kg
Weight of case	7.56 kg
EAN of inner box	4038917120845
EAN case	4038917017480

This is the current specification for this product. Sarstedt reserves the right to make changes, in full or in part, at any time without prior notification.

Date of issue:  
2024-05-07

This document was prepared by EDP support and is valid without signature.



**SARSTEDT**