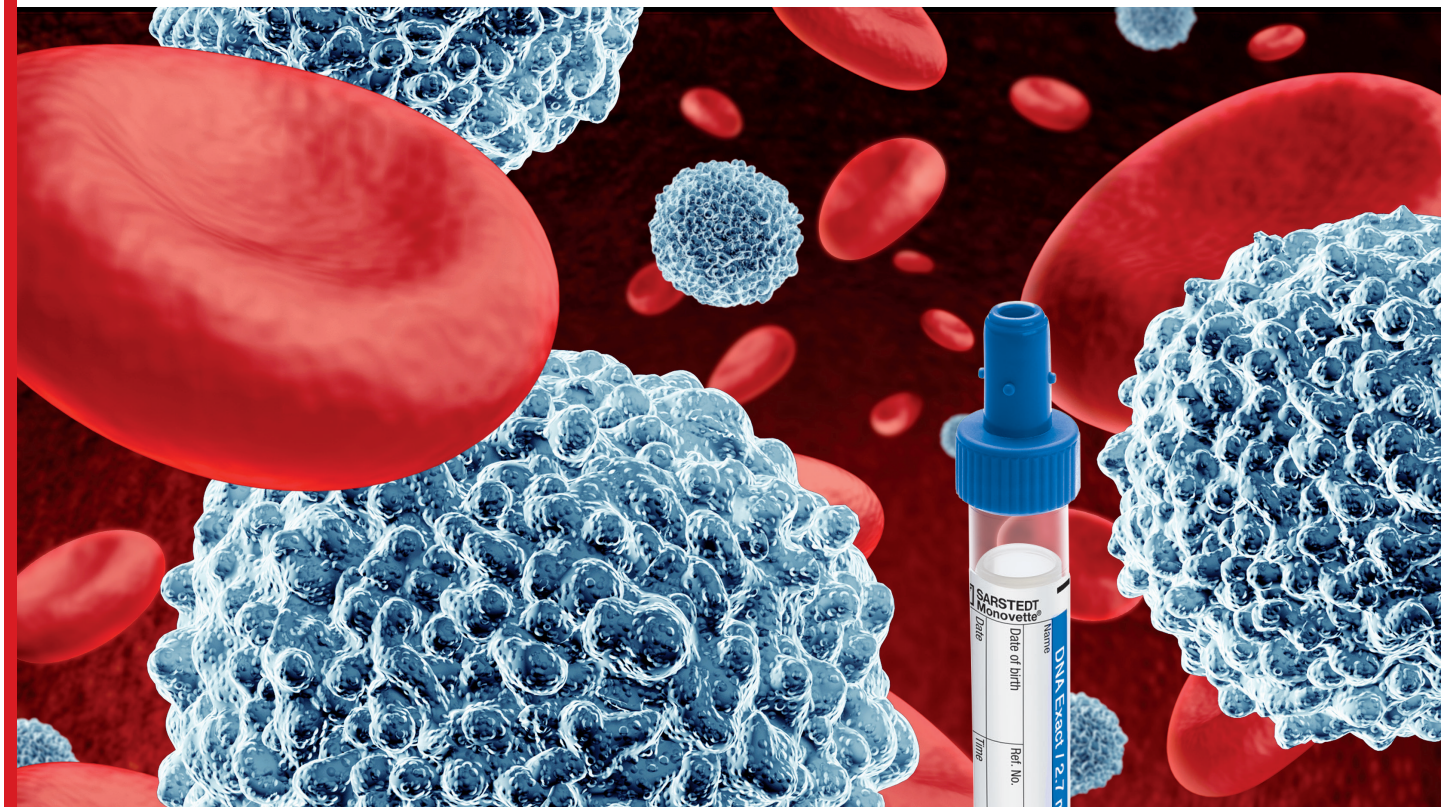


# S-Monovette® DNA Exact

Standardised preanalytical gDNA stabilisation

NEW!



## S-Monovette® DNA Exact

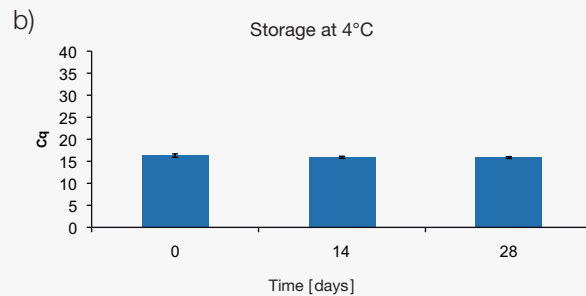
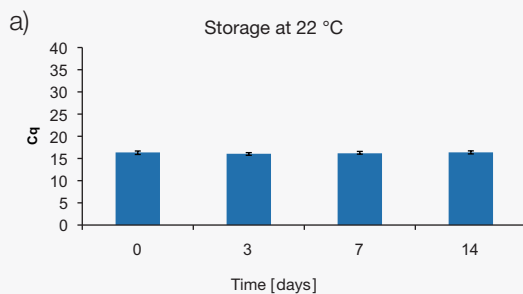
- Reproducible isolation of high-quality gDNA
- Validated time and temperature parameters
- Optimal sample comparability

Temperature fluctuations during the transport or storage of blood samples may have an adverse effect on gDNA quality. The new S-Monovette® DNA Exact (CE/IVD) stabilises the gDNA in the sample enabling a standardised sample under validated storage conditions:

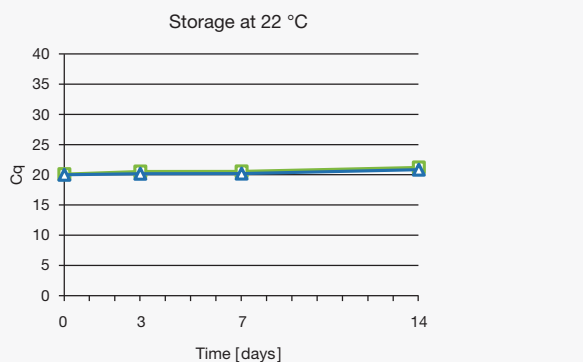
- at 35°C: 5 days
- at 22 °C: 14 days
- at 4°C: 28 days
- at -20°C: at least 1 year (study in progress)
- 5 freezing & thawing cycles

## DNA stabilisation during transport and storage

### 1. S-Monovette® DNA Exact



### 2. S-Monovette DNA® Exact vs. competitor products



#### Test procedure:

Real-time PCR of a GAPDH gene fragment.  
The bar charts show the median of detected Cq levels that were determined from DNA samples isolated from whole blood samples. The samples were stored in the S-Monovette® DNA Exact or in a competitor product in accordance with the defined temperature and time parameters. The error bars represent the interquartile range (25% - 75%).

—▲— S-Monovette® DNA Exact      —■— Competitor A

For further information and data on the S-Monovette® DNA Exact, please refer to our White Paper “Sarstedt S-Monovette® DNA Exact – A New IVD Certified Blood Collection Tube for Collection, Transport and Stabilization of Whole Blood for Genomic DNA Analysis”.

## Ordering information

Order No	Description	Packaging
04.1948.001	S-Monovette® DNA Exact 2.7 ml	50 inner case/ 500 case

SARSTEDT AG & Co.  
P.O. Box 12 20  
D-51582 Nümbrecht  
Phone +49 2293 305-0  
Fax +49 2293 305-2470  
info@sarstedt.com  
www.sarstedt.com