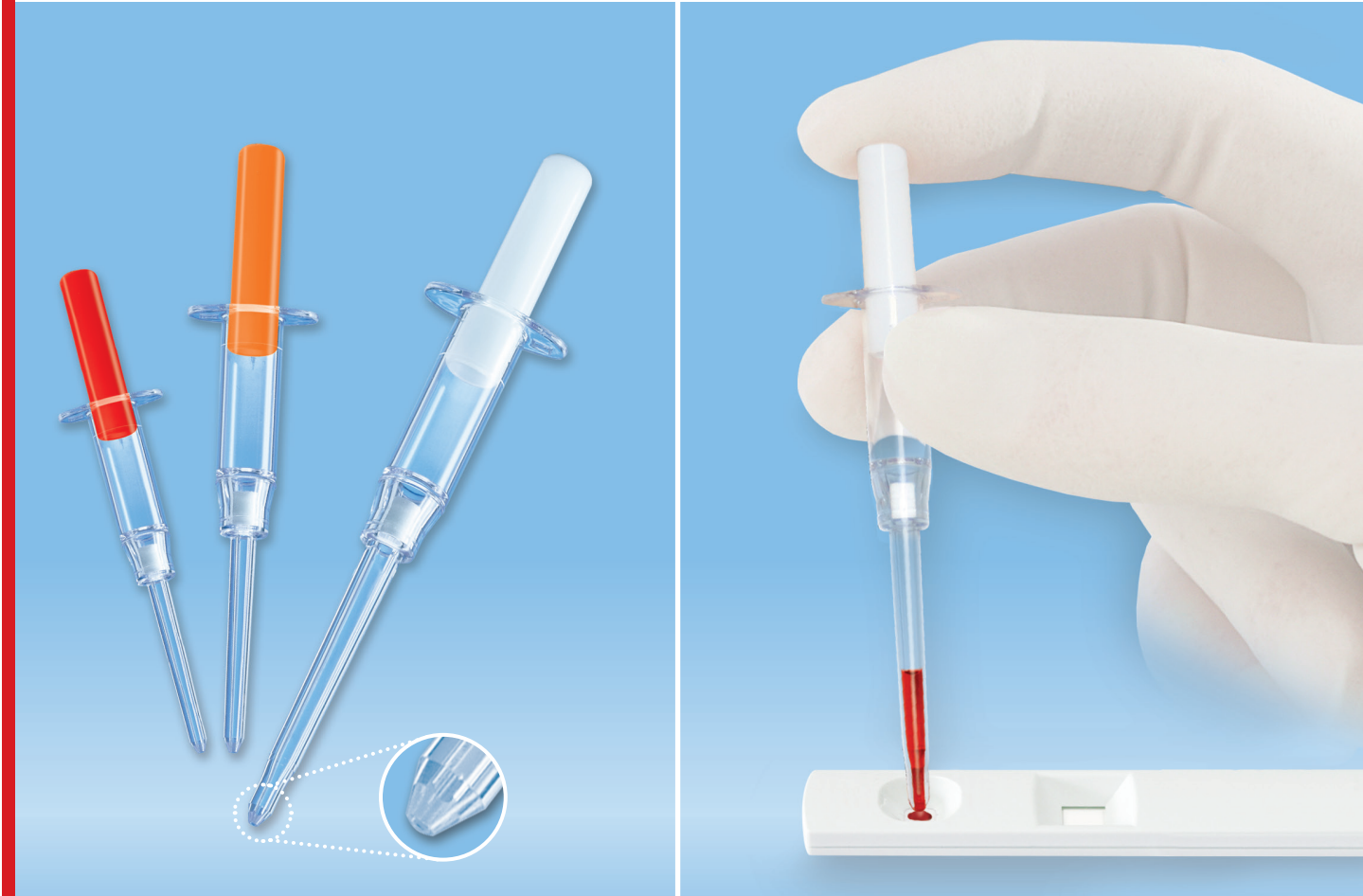


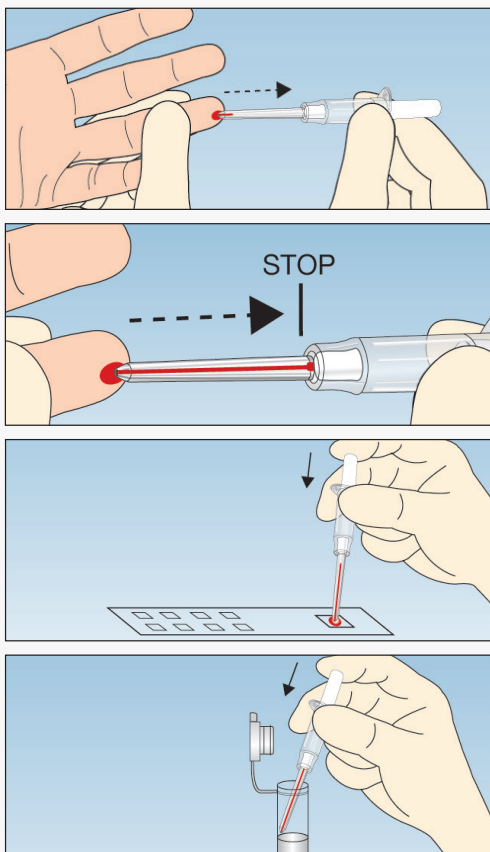
# Minivette® POCT

Collection and dispensing of small blood samples for Point-of-Care tests



## Minivette® POCT

- Easy sample recovery due to optimal capillary features
- Precise dispensing of small whole blood volumes
- Prevents spillage during transfer to test card
- Available in 10 µl, 20 µl, 50 µl, 100 µl and 200 µl volumes
- Preparations: Neutral, Heparin and EDTA



**1** Hold the Minivette® POCT in a horizontal, slightly declined position, under the wings. The air ventilation hole at the end of the piston should not be covered, nor should the piston be pushed down. Collect the blood drops using the capillary tip ensuring there are no air bubbles present.

**2** Blood collection is complete when the blood has reached the filter at the other end of the capillary tip.

**3a** Place the capillary tip on the test field and slightly press down the piston to dispense the whole blood sample.

**3b** Alternatively, dispense the sample into a micro tube.

*All patient blood samples must be treated as potentially infectious. Wear gloves!*

## Ordering Information

| Order No.              | Description                               | Colour Code | Packaging  |                                      |
|------------------------|---|-------------|--|--------------------------------------|
| <b>NEW</b> 17.2111.920 | Minivette® POCT with cap<br>20 µl neutral | white       | ind. wrapped<br>100 pcs./inner box / 1.000 pcs./case |                                      |
| 17.2111.010            | Minivette® POCT<br>10 µl neutral          | white       | 200 pcs./inner box / 2.000 pcs./case                 |                                      |
| 17.2111.020            | Minivette® POCT<br>20 µl neutral          | white       |  |                                      |
| 17.2111.050            | Minivette® POCT<br>50 µl neutral          | white       |  |                                      |
| 17.2111.100            | Minivette® POCT<br>100 µl neutral         | white       |  |                                      |
| 17.2111.200            | Minivette® POCT<br>200 µl neutral         | white       |  |                                      |
| 17.2112.020            | Minivette® POCT<br>20 µl Lithium Heparin  | orange      | 200 pcs./inner box / 2.000 pcs./case                 |                                      |
| 17.2112.120            | Minivette® POCT<br>20 µl Lithium Heparin  | green       |  |                                      |
| 17.2112.050            | Minivette® POCT<br>50 µl Lithium Heparin  | orange      |  |                                      |
| 17.2112.150            | Minivette® POCT<br>50 µl Lithium Heparin  | green       |  |                                      |
| 17.2112.100            | Minivette® POCT<br>100 µl Lithium Heparin | orange      |  |                                      |
| 17.2112.101            | Minivette® POCT<br>100 µl Lithium Heparin | green       |  |                                      |
| 17.2112.200            | Minivette® POCT<br>200 µl Lithium Heparin | orange      |  | 150 pcs./inner box / 1.500 pcs./case |
| 17.2112.201            | Minivette® POCT<br>200 µl Lithium Heparin | green       |  |                                      |
| 17.2113.020            | Minivette® POCT<br>20 µl EDTA             | red         |  | 200 pcs./inner box / 2.000 pcs./case |
| 17.2113.120            | Minivette® POCT<br>20 µl EDTA             | violet      |  |                                      |
| 17.2113.050            | Minivette® POCT<br>50 µl EDTA             | red         |  |                                      |
| 17.2113.150            | Minivette® POCT<br>50 µl EDTA             | violet      |  |                                      |
| 17.2113.201            | Minivette® POCT<br>200 µl EDTA            | violet      | 150 pcs./inner box / 1.500 pcs./case                 |                                      |

SARSTEDT AG & Co.  
P.O. Box 12 20  
D-51582 Nümbrecht  
Phone +49 2293 3050  
Fax +49 2293 305-122  
info@sarstedt.com  
www.sarstedt.com