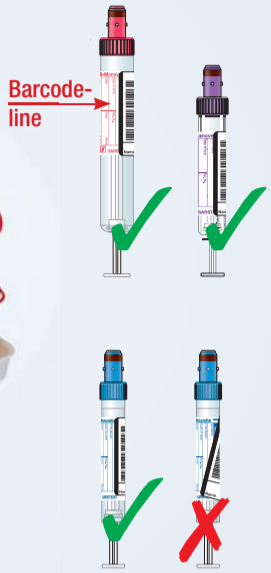


Blood collection using the S-Monovette®

The route to the perfect result

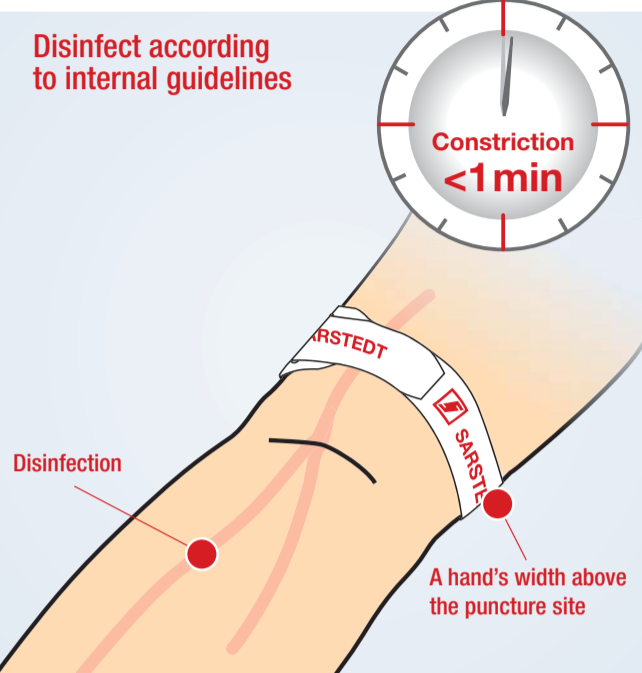
1 Preparation

Apply the barcode label



Barcode-line

Disinfect according to internal guidelines



Constriction <math>< 1 \text{ min}</math>

Disinfection

A hand's width above the puncture site

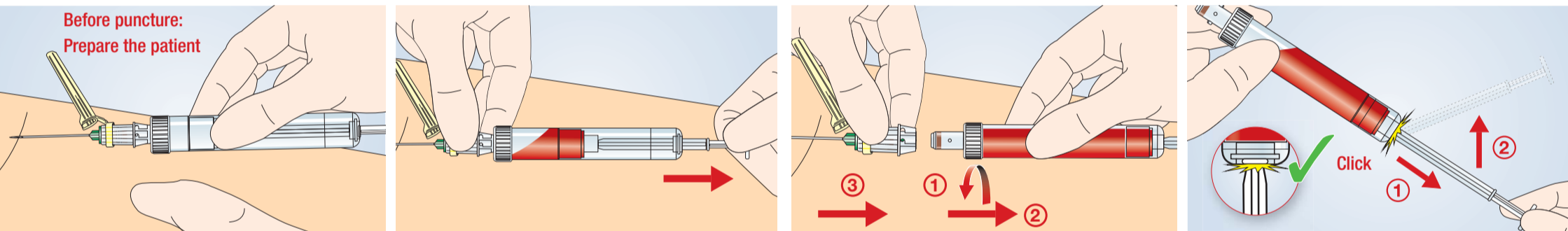
Recommended order of draw

According to Gurr ¹ :	According to CLSI ² :
Blood culture	Blood culture
Serum/serum-gel blood	Citrate blood
Citrate blood	Serum/serum-gel blood
Heparin/heparin-gel blood	Heparin/heparin-gel blood
EDTA blood	EDTA blood
Fluoride/citrate-fluoride blood (S-Monovette® GlucoEXACT)	Fluoride/citrate-fluoride blood (S-Monovette® GlucoEXACT)

¹ Gurr et al "Musterstandardarbeitsanweisung Präanalytik" J Lab Med 2011
² CLSI GP41 Procedures for the Collection of Diagnostic Blood Specimens by Venipuncture, Approved Guideline

2 Blood collection

Aspiration technique – gentle blood collection

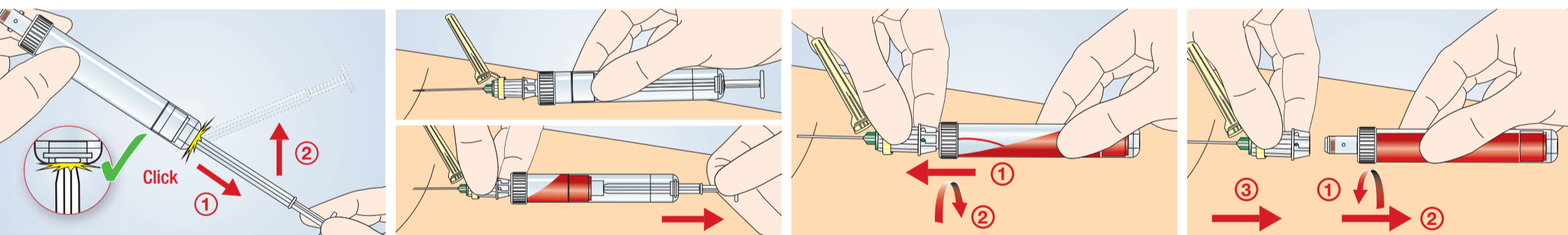


Before puncture: Prepare the patient

Click

Vacuum technique³ – blood collection with fresh vacuum

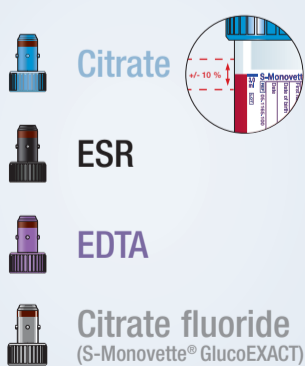
As a rule, SARSTEDT recommends filling the first S-Monovette® using the aspiration technique so that the blood collection starts gently.



Click

3 Sample handling & disposal

Fill CORRECTLY for accurate results



Gently invert several times

Citrate, CTAD, PFA

ESR

Heparin

EDTA, ThromboExact

Fluoride

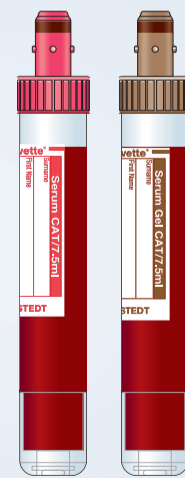
Citrate fluoride (S-Monovette® GlucoEXACT)

CPDA₁

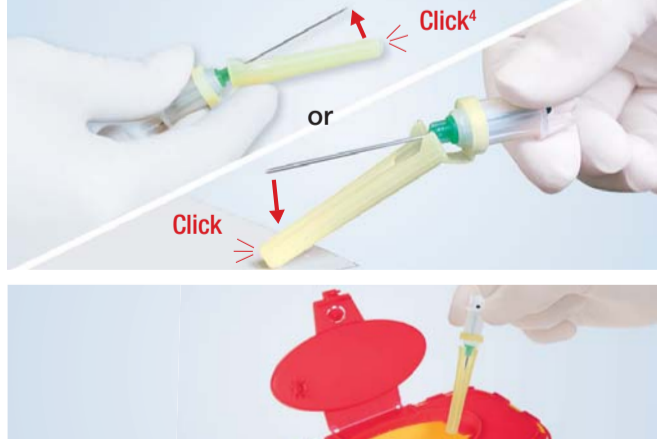


Store and transport correctly

After blood collection: Store S-Monovette® Serum/Serum-Gel upright for 30 minutes and transport upright



Activation via single-handed operation



The contents of this poster are recommendations only and do not, under any circumstances, replace medical, scientific or technical advice.

³ If a citrate sample is to be taken first, it is recommended to take a neutral tube beforehand. As a rule, SARSTEDT recommends filling the first S-Monovette® using the aspiration technique so that the blood collection starts gently. The collection can then continue using the vacuum technique.
⁴ You can also activate the needle protector with your index finger. For reliable function, ensure that this is done at the bottom end of the protector.