

# Blood collection using the S-Monovette®

## The route to the perfect result

### 1 Preparation

**Apply the barcode label**

Barcode line

**Disinfect according to the internal hygiene plan**

Disinfection

A hand's width above the puncture site

Constriction <1 min

**Recommended order of draw**

According to Gurr <sup>1</sup> :	According to CLSI <sup>2</sup> :
Blood culture	Blood culture
Serum/serum-gel blood	Citrate blood
Citrate blood	Serum/serum-gel blood
Heparin/heparin-gel blood	Heparin/heparin-gel blood
EDTA blood	EDTA blood
Fluoride/citrate-fluoride blood (S-Monovette® GlucoEXACT)	Fluoride/citrate-fluoride blood (S-Monovette® GlucoEXACT)

<sup>1</sup> Gurr et al "Musterstandardarbeitsanweisung Präanalytik" J Lab Med 2011  
<sup>2</sup> CLSI GP41 Procedures for the Collection of Diagnostic Blood Specimens by Venipuncture, Approved Guideline

### 2 Blood collection

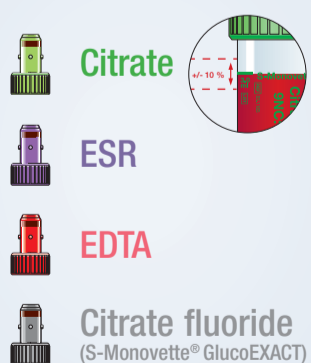
#### Aspiration technique – gentle blood collection

#### Vacuum technique<sup>3</sup> – blood collection with fresh vacuum

As a rule, SARSTEDT recommends filling the first S-Monovette® using the aspiration technique so that the blood collection starts gently.

### 3 Sample handling & disposal

#### Fill CORRECTLY for accurate results



#### Turn upside down carefully several times

- Citrate, CTAD, PFA
- ESR
- Heparin
- EDTA, ThromboExact
- Fluoride
- Citrate fluoride (S-Monovette® GlucoEXACT)
- CPDA<sub>1</sub>

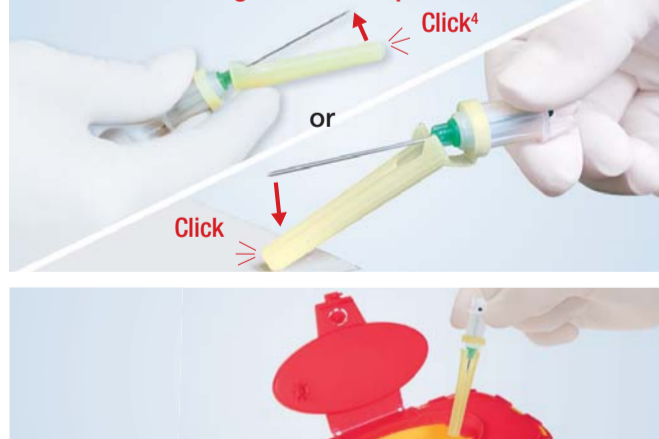


#### Store and transport correctly

After blood collection:  
 Store S-Monovette®  
 Serum/Serum-Gel upright for 30 minutes and transport upright



#### Activation via single-handed operation



We would like to point out that the topics addressed here ("Blood collection using the S-Monovette®") are recommendations only and do not, under any circumstances, replace medical, scientific or technical advice.

<sup>3</sup> If a citrate sample is to be taken first, it is recommended to take an empty tube beforehand.  
 As a rule, SARSTEDT recommends filling the first S-Monovette® using the aspiration technique so that the blood collection starts gently. The collection can then continue using the vacuum technique.  
<sup>4</sup> You can also activate the needle protector with your index finger. For reliable function, ensure that this is done at the bottom end of the protector.